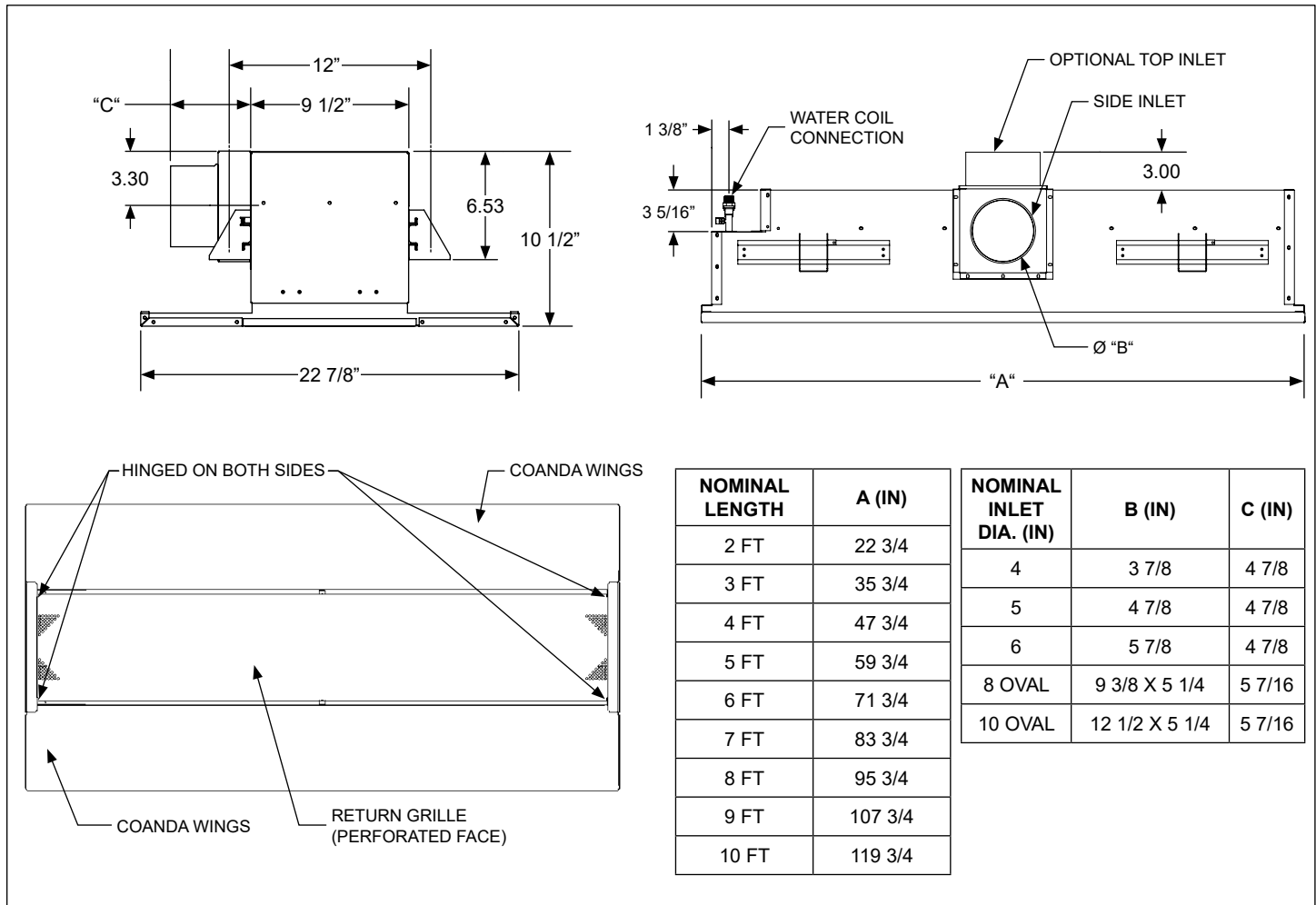


## CBE2-12 • Linear Exposed Mounted Chilled Beam • 1-Way & 2-Way Discharge • Vertical Coil

### Top Inlet Configurations



### General Description

- 12 inch wide, linear active chilled beam diffuser, available with 1-way or 2-way air distribution.
- Designed with integrated coanda plates for exposed installations.
- 2 to 10 feet chilled beam length in 1 foot increment.
- 2 pipe or 4 pipe coil configurations.
- Casing manufactured with galvanealed G90, 20 gauge sheet metal. Mechanically sealed, leak resistant construction.
- Coil standard with air vent, coil drain and 1/2" water connection, optional sweat or threaded connection.
- Rails with adjustable mounting brackets are provided, quantity varies per unit length.
- 4, 5, 6 or 8 inch oval and 10 inch oval inlet connection, located either on the side or top.
- Return face panel assembly is hinged, on both sides, allowing to swing open from either side or to be completely removed and provide easy access to internal components.
- Return face panel assembly available with round perforation or linear bar grille.
- Exterior face, border elements and visible internal components are painted in color of choice. Exposed plenum components painted black. Paint is powder coat, a mix of polyester and epoxy.

Basic Unit Configuration

Beam Width  
(nominal- in)

☐ 12

Primary Air Inlet Diameter  
Connection (inch)

☐ 5   ☐ 6   ☐ 8\*   ☐ 10\*

Coil Type - Water  
Side Connection

☐ 2 Pipe - Left Hand  
☐ 2 Pipe - Right Hand  
☐ 4 Pipe - Left Hand  
☐ 4 Pipe - Right Hand

Unit Length (nominal - ft)

☐ 2   ☐ 3   ☐ 4  
☐ 5   ☐ 6   ☐ 7  
☐ 8   ☐ 9   ☐ 10

Primary Air Inlet  
Orientation

☐ Side   ☐ Top

Coil Connection -Type

☐ ½ in Sweat (SWT)  
☐ ½ in MNPT\* (MPT)  
☐ ¾ in MNPT\* (3PT)

Throw Pattern

☐ F - Same Side as Inlet  
☐ B - Opposite Side of Inlet  
☐ 2 - Way

Face Pattern

☐ Circular Perforation

Exposed Face Finish  
Color

☐ White #26  
☐ Black #84

Nozzle Configuration

☐ M13   ☐ M17   ☐ M23  
☐ M31

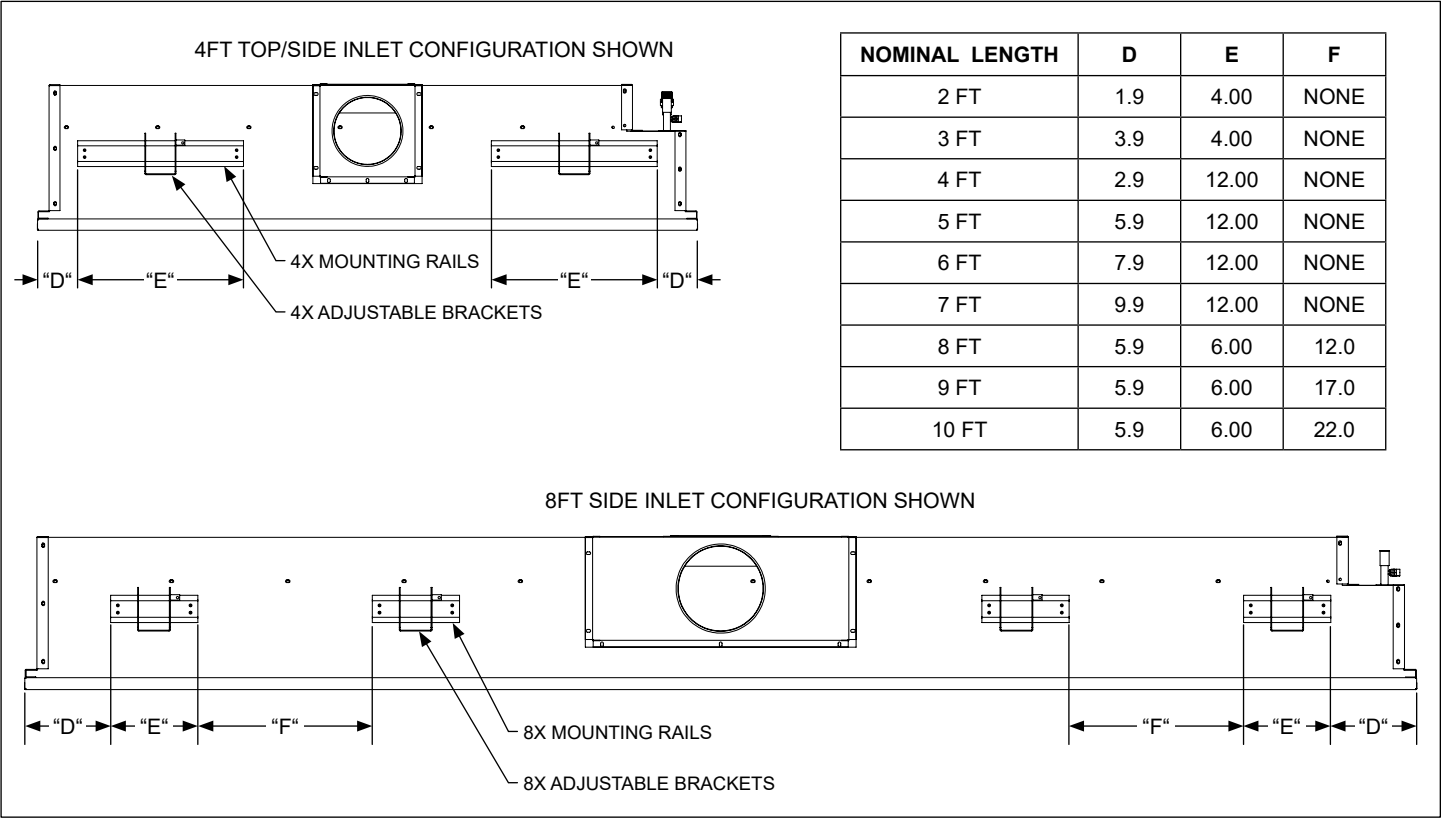
Accessories

☐ Lint Screen  
☐ Insulation

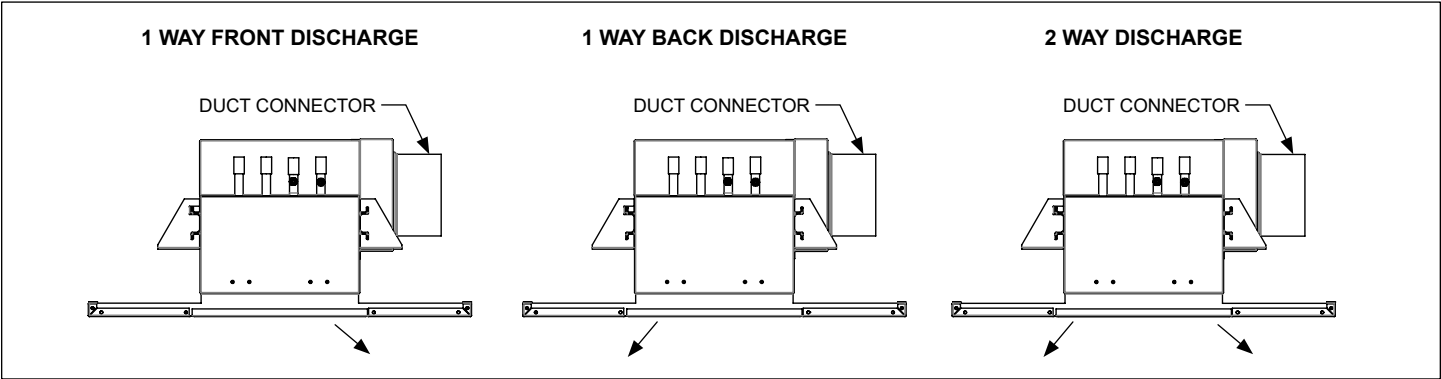
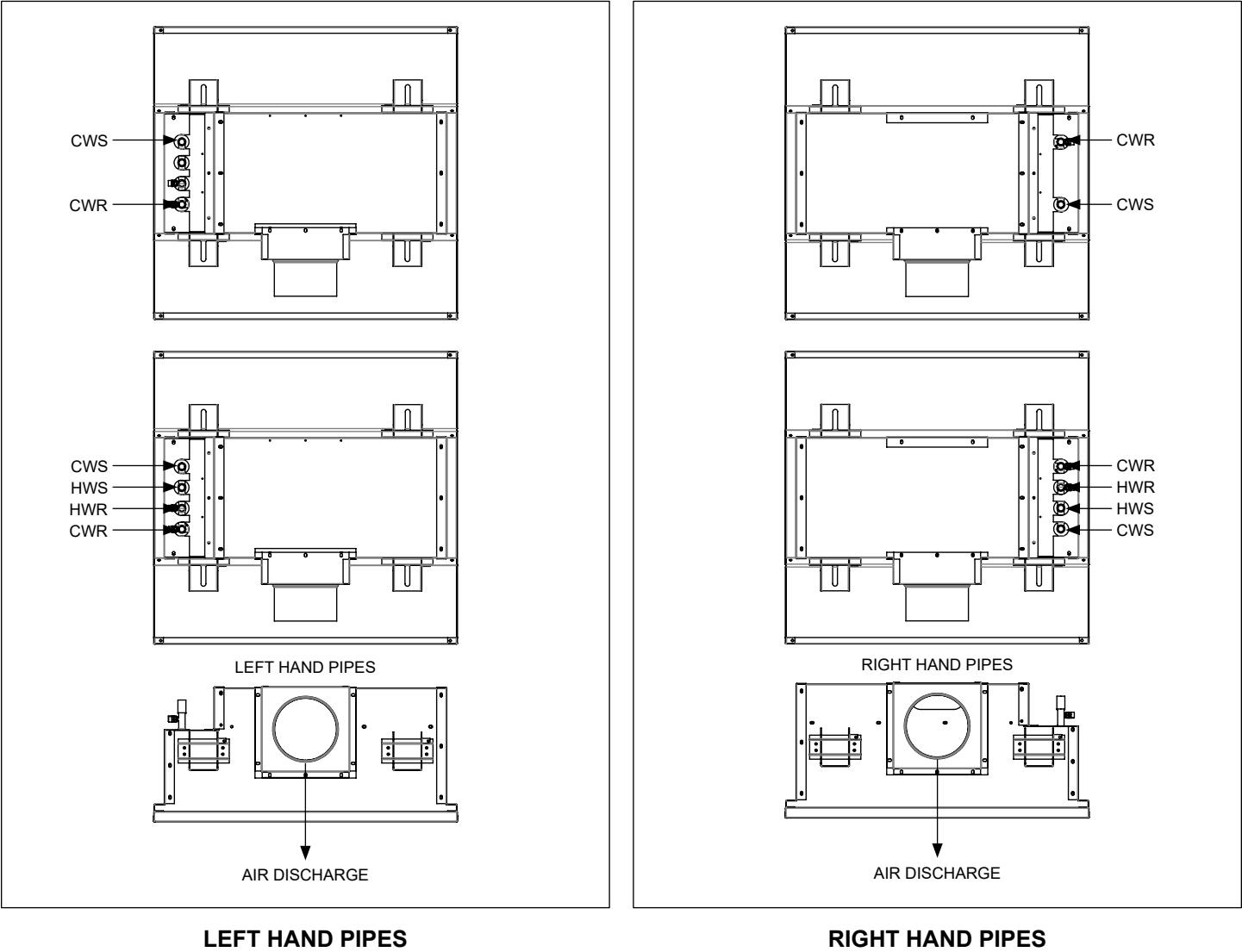
\*Note: 8" and 10" are equivalent oval

\*Note: MNPT required for CBHK hoses.  
CBHK hoses ordered separately.

Hanger Bracket Details

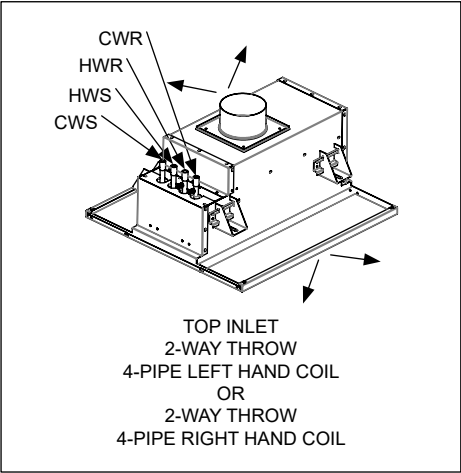
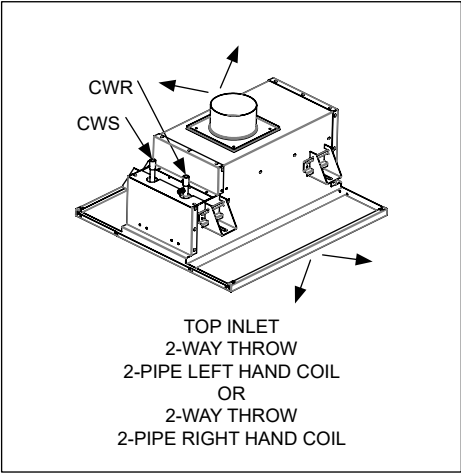
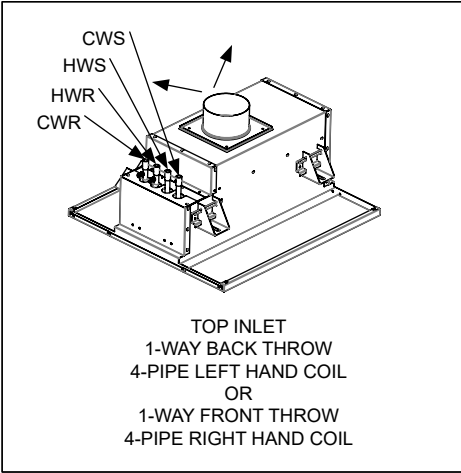
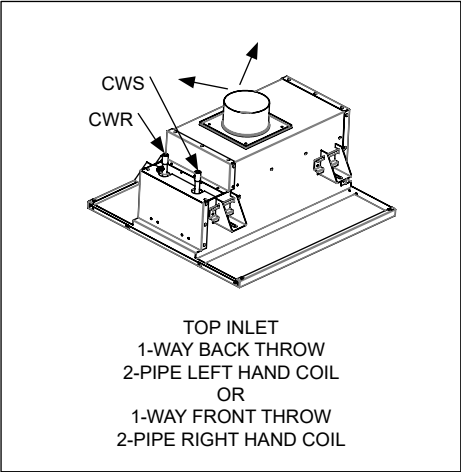
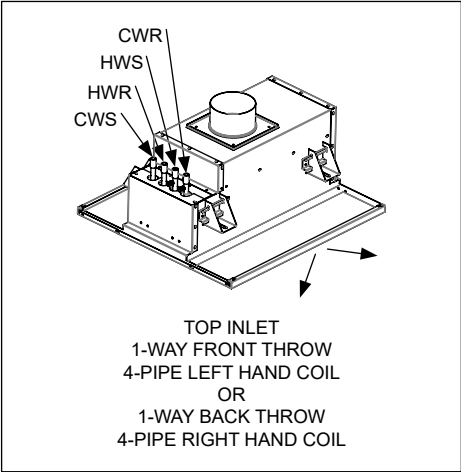
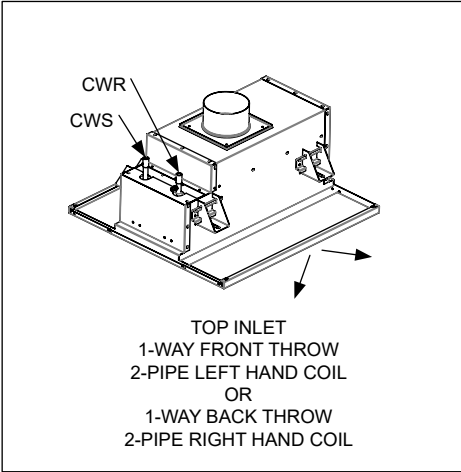


# Side Inlet, Discharge and Piping Configuration



**Note:**  
For back throw, the pipes CWS, HWS, HWR, and CWR are in opposite order from shown.

# Top Inlet, Discharge and Piping Configuration



**R - RETURN    W - WATER    S - SUPPLY**  
**HWR - HEATING WATER RETURN    HWS - HEATING WATER SUPPLY**  
**CWR - COOLING WATER RETURN    CWS - COOLING WATER SUPPLY**  
\*HOT WATER CONNECTIONS ON 4-PIPE COIL ONLY